

Ave Verum Corpus for Wood Quartet

William Byrd (1543-1623)
arr. M. Kamada

Musical score for the first system, measures 1-7. The instruments are Flute, Oboe, Clarinet, and Bassoon. The key signature is two flats (B-flat and E-flat), and the time signature is common time (C). The Flute part begins with a whole rest followed by a melodic line starting on G4. The Oboe part has a whole rest followed by a melodic line starting on G4. The Clarinet part has a whole rest followed by a melodic line starting on G3. The Bassoon part has a whole rest followed by a melodic line starting on G2. The music is in a homophonic texture with some melodic interplay.

Musical score for the second system, measures 8-14. This section is marked with a box labeled 'A' above the first measure. The instruments are Flute, Oboe, Clarinet, and Bassoon. The key signature is two flats (B-flat and E-flat), and the time signature is common time (C). The Flute part continues with a melodic line starting on G4. The Oboe part continues with a melodic line starting on G4. The Clarinet part continues with a melodic line starting on G3. The Bassoon part continues with a melodic line starting on G2. The music is in a homophonic texture with some melodic interplay.

Musical score for the third system, measures 15-21. This section is marked with a box labeled 'B' above the first measure. The instruments are Flute, Oboe, Clarinet, and Bassoon. The key signature changes to one flat (B-flat) and one sharp (F-sharp), and the time signature is common time (C). The Flute part continues with a melodic line starting on G4. The Oboe part continues with a melodic line starting on G4. The Clarinet part continues with a melodic line starting on G3. The Bassoon part continues with a melodic line starting on G2. The music is in a homophonic texture with some melodic interplay.

22

C

D

30

E

37

42

1.

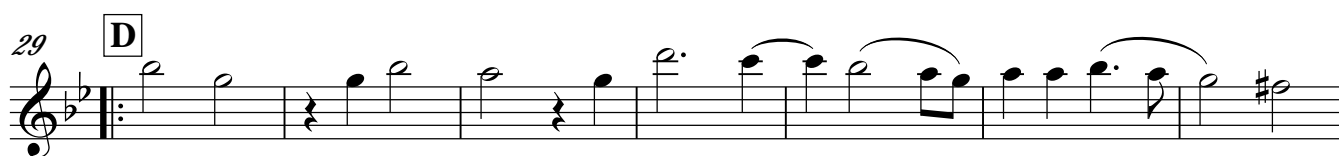
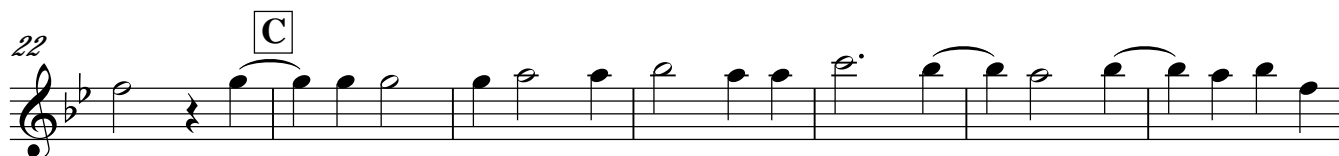
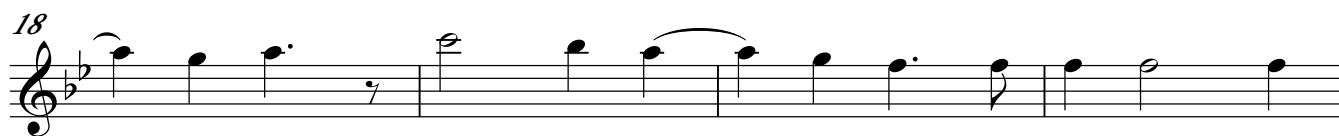
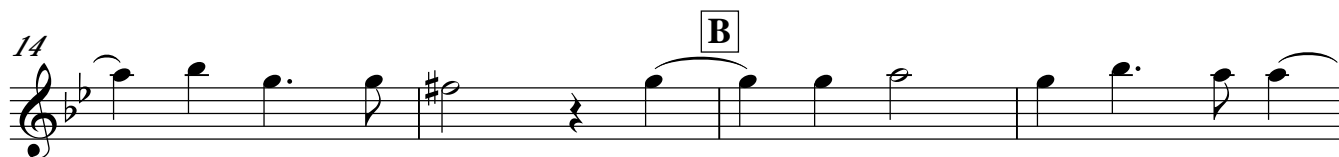
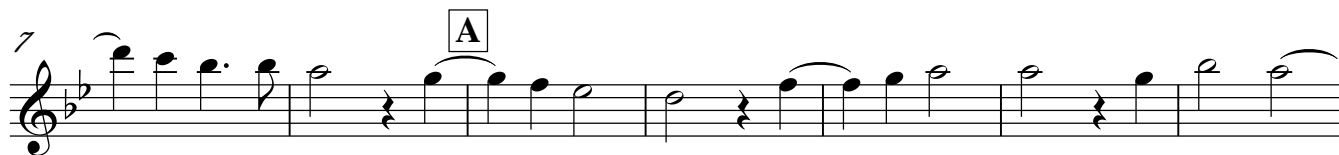
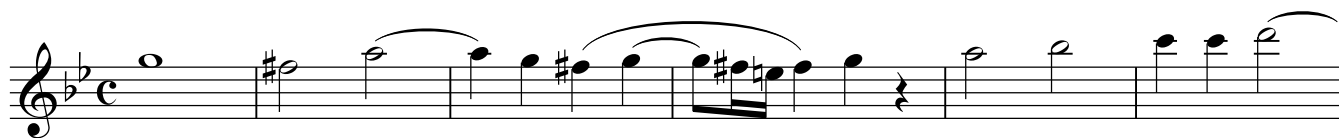
2.

Flute

Ave Verum Corpus for Wood Quartet

William Byrd (1543-1623)

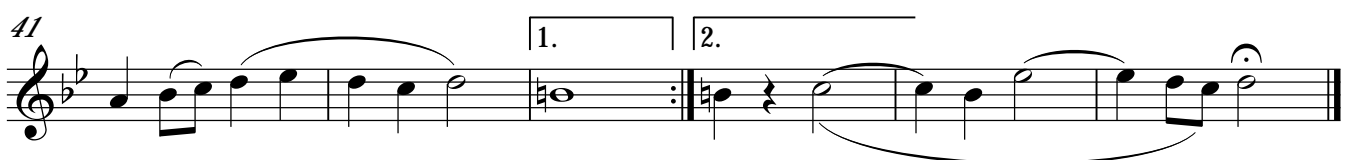
arr. M. Kamada



Oboe

Ave Verum Corpus for Wood Quartet

William Byrd (1543-1623)
arr. M. Kamada

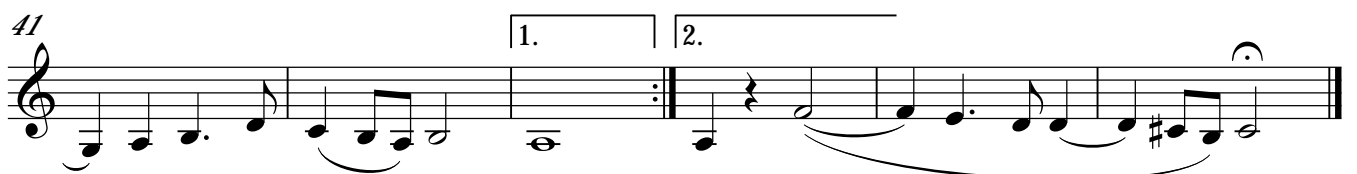
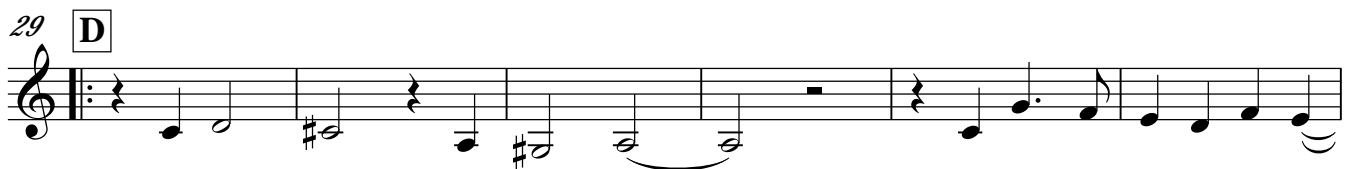
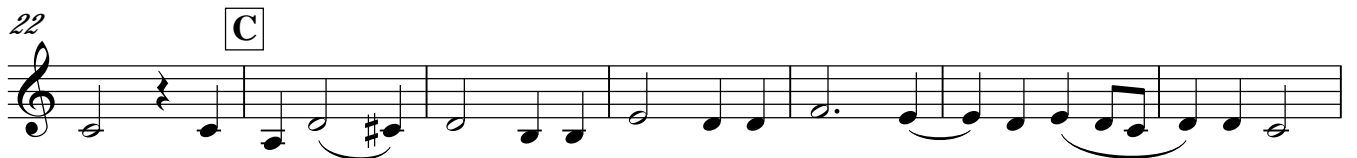
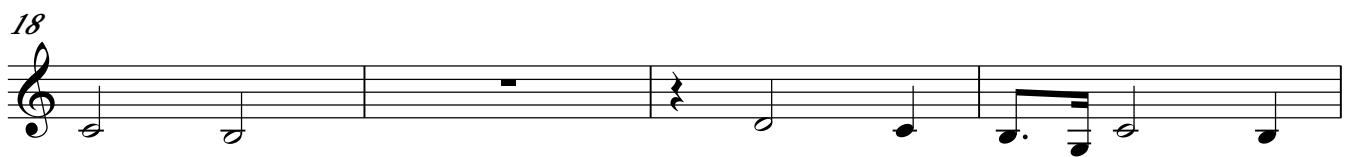
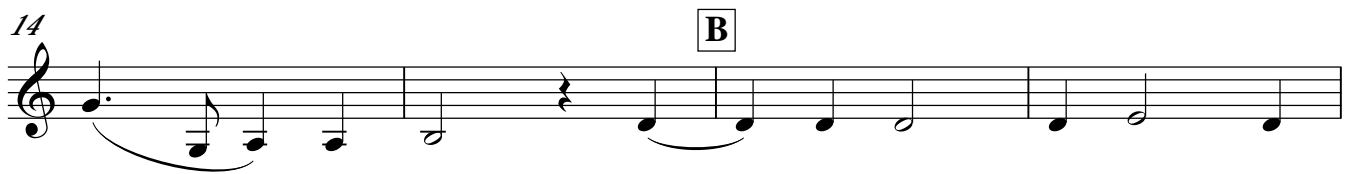


Clarinet in Bb

Ave Verum Corpus for Wood Quartet

William Byrd (1543-1623)

arr. M. Kamada



Bassoon

Ave Verum Corpus for Wood Quartet

William Byrd (1543-1623)
arr. M. Kamada

